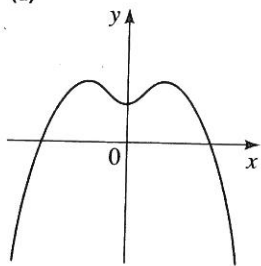


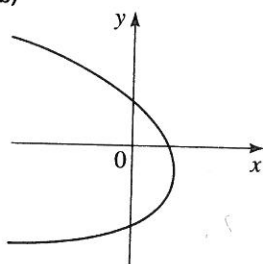
Unit 1 Day 1 HW(2)

5-6 ■ Determine whether the curve is the graph of a function of x .

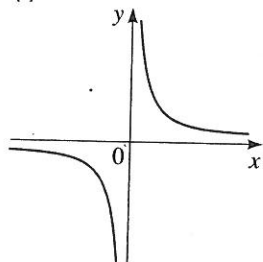
5. (a)



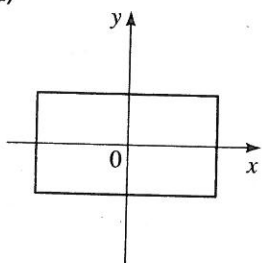
(b)



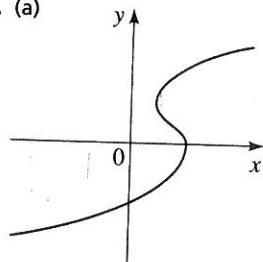
(c)



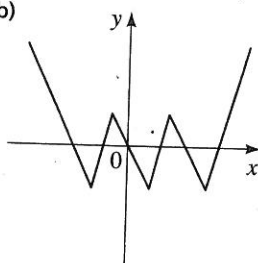
(d)



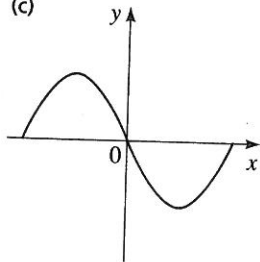
6. (a)



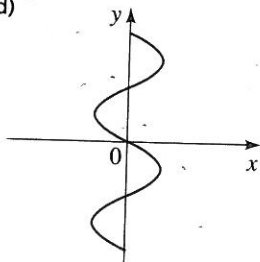
(b)



(c)

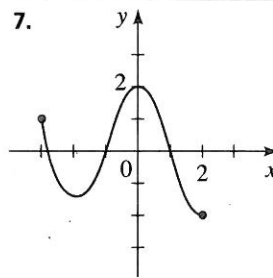


(d)

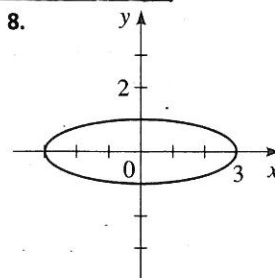


7-10 ■ Determine whether the curve is the graph of a function of x . If it is, state the domain and range of the function.

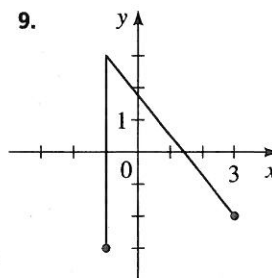
7.



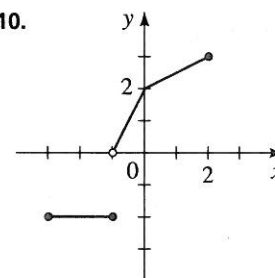
8.



9.

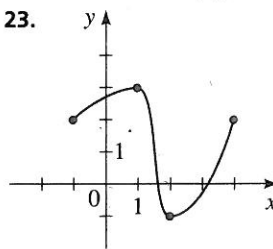


10.

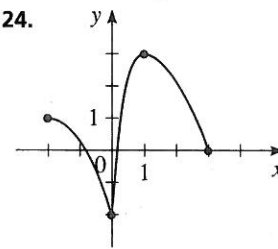


23-26 ■ The graph of a function is given. Determine the intervals on which the function is increasing and on which it is decreasing. *Also, give domain & range*

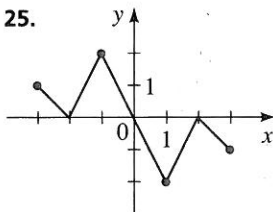
23.



24.



25.



26.

