

Unit 1 Quiz 2 Review – Transformations

Name Key

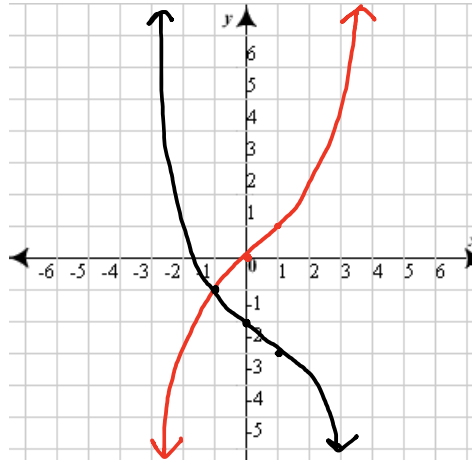
For each of the following functions

- Draw the parent function
- Describe each transformation
- Sketch a final graph
- Label the domain and range of the final graph

1. $f(x) = -x^3 - 2$

$D: (-\infty, \infty)$

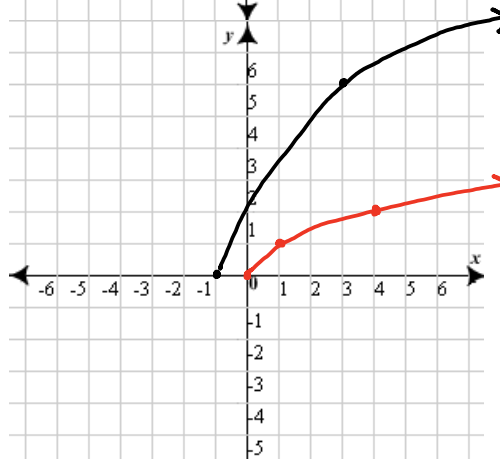
$R: (-\infty, \infty)$



2. $f(x) = 3\sqrt{x+1}$

$D: [-1, \infty)$

$R: [0, \infty)$



3. $f(x) = -|x - 2| + 4$

